

**Brinsupri**<sup>®</sup>  
(brensocaticib) tablets, 10mg·25mg

**The first & only  
FDA-approved  
treatment for non-cystic  
fibrosis bronchiectasis  
in people 12 years  
and older**

BRINSUPRI is proven  
to reduce flares

See study results inside



### **What is BRINSUPRI?**

BRINSUPRI is a prescription medicine used to treat non-cystic fibrosis bronchiectasis (NCFB) in adults and children 12 years of age and older. It is not known if BRINSUPRI is safe and effective in children under 12 years of age.

### **IMPORTANT SAFETY INFORMATION**

**Before taking BRINSUPRI, tell your healthcare provider about all of your medical conditions, including if you:**

- have recently received or are scheduled to receive any live attenuated vaccinations.

**Please see additional Important Safety Information throughout and full [Prescribing Information](#) and [Patient Information](#) at [BRINSUPRI.com](http://BRINSUPRI.com).**

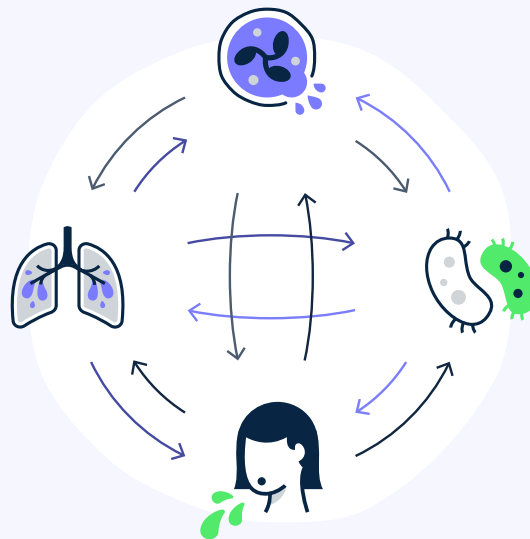
# Bronchiectasis is a chronic, inflammatory lung disease that can get worse over time

Its interconnected factors can lead to the worsening of bronchiectasis (BE) symptoms

## Chronic airway inflammation

As your body's immune system tries to clear infection and address inflammation in your lungs, this process can result in **chronic irritation and swelling, or inflammation**

**Lung damage**  
In BE, airways are **abnormally widened and damaged**, which makes it difficult to clear mucus



## Lung infection

Increased mucus creates an **attractive environment for bacteria to grow**. This can lead to chronic infection, inflammation, and damage

## Difficulty clearing mucus

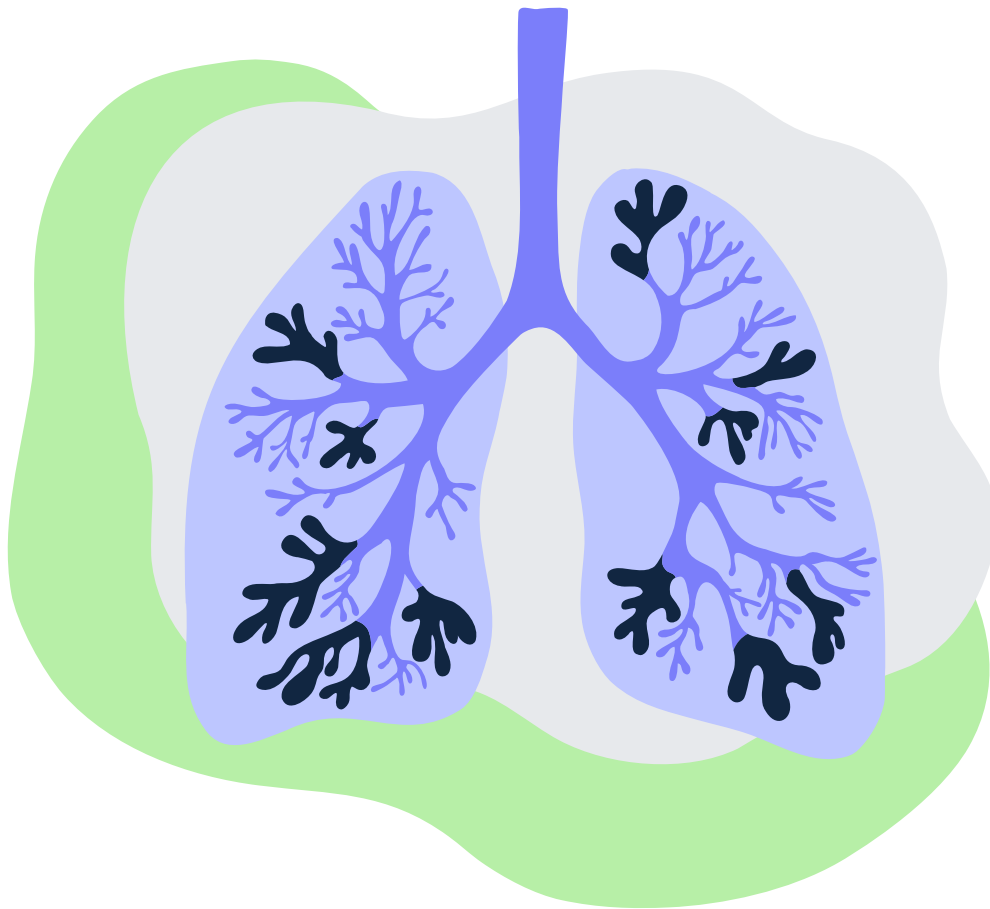
As mucus builds up in the airways, it becomes **difficult to clear**, creating an attractive environment for bacteria to grow

Please see additional Important Safety Information throughout and full [Prescribing Information](#) and [Patient Information](#) at [BRINSUPRI.com](http://BRINSUPRI.com).

**Brinsupri**<sup>®</sup>  
(brensocatic) tablets, 10mg/25mg

# When your bronchiectasis symptoms get worse, it can be a sign of a damaging flare

A single bronchiectasis (BE) flare can last up to a month and have a serious impact on your physical and emotional well-being



## BE flares can:



Make symptoms like coughing, shortness of breath, and fatigue worse



Lead to more flares



Lead to a loss of lung function

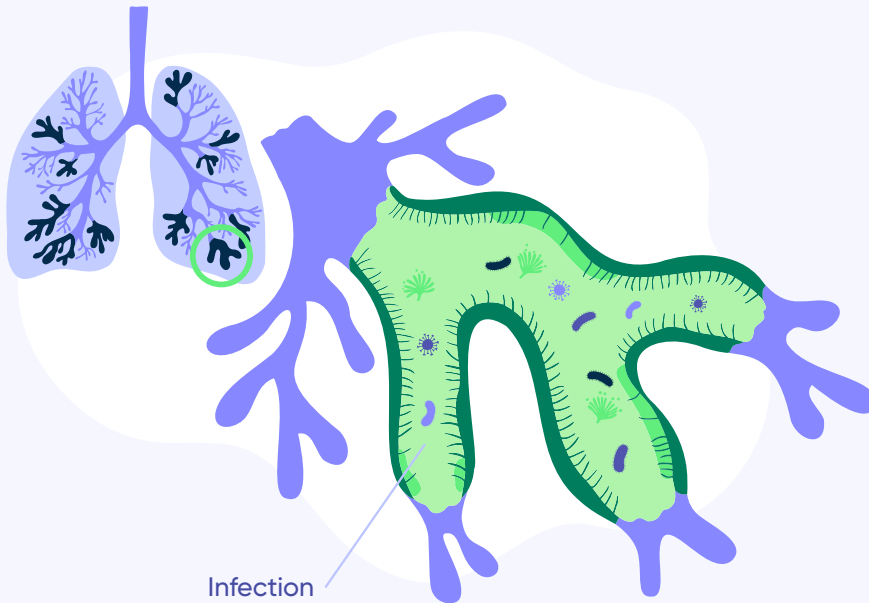
That's why proactively reducing flares is an important part of treating bronchiectasis

Please see additional Important Safety Information throughout and full [Prescribing Information](#) and [Patient Information](#) at [BRINSUPRI.com](https://www.BRINSUPRI.com).

**Brinsupri**<sup>®</sup>  
(brensocatib) tablets, 10mg/25mg

# BRINSUPRI targets a key driver of bronchiectasis

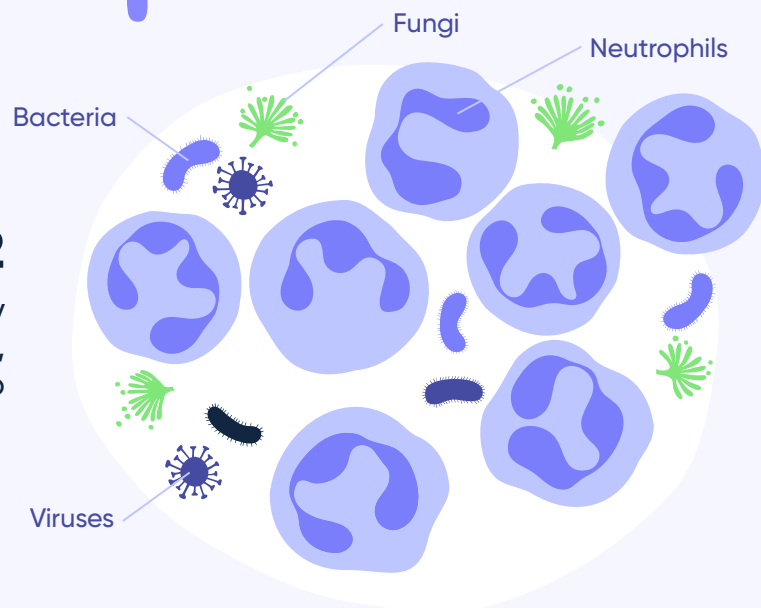
In bronchiectasis (BE), inflammation caused by overactive immune cells, called neutrophils, can damage your lungs and increase your risk of flares



**01**

If you live with BE, your airways are widened and inflamed, putting you at risk for chronic infection

**02**  
Your body responds by sending many immune cells, including neutrophils, to help



## IMPORTANT SAFETY INFORMATION (cont'd)

**Before taking BRINSUPRI, tell your healthcare provider about all of your medical conditions, including if you: (cont'd)**

- are pregnant or plan to become pregnant. It is not known if BRINSUPRI will harm your unborn baby.
- are breastfeeding or plan to breastfeed. It is not known if BRINSUPRI passes into your breast milk. Talk to your healthcare provider about the best way to feed your baby during this time.

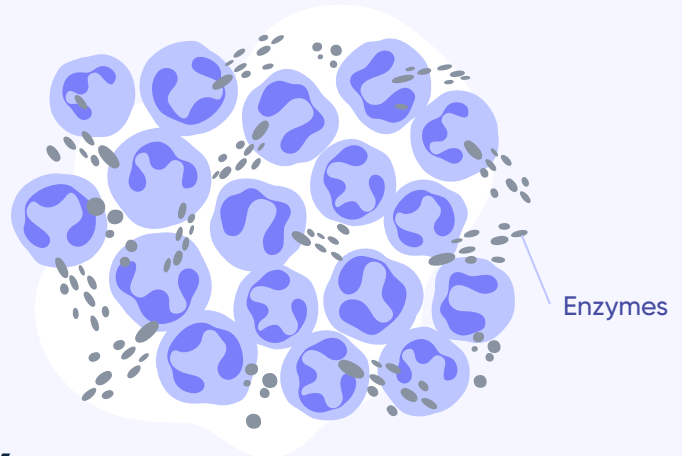
**Please see additional Important Safety Information throughout and full [Prescribing Information](#) and [Patient Information](#) at [BRINSUPRI.com](https://www.brinsupri.com).**

**Brinsupri**<sup>®</sup>  
(brensocatib) tablets, 10mg/25mg

# BRINSUPRI targets a key driver of bronchiectasis

03

But these neutrophils overreact and release too many enzymes to help defend and repair



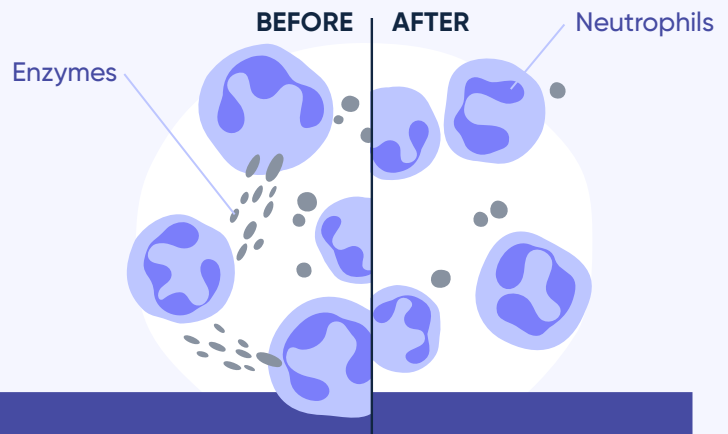
04

The presence of too many enzymes can cause more inflammation and damage in the lungs



05

BRINSUPRI works by reducing the overreaction of neutrophils to help target inflammation



**BRINSUPRI offers you a different approach to treating bronchiectasis**

## IMPORTANT SAFETY INFORMATION (cont'd)

**Tell your healthcare provider about all the medicines you take**, including prescription and over-the-counter medicines, vitamins, and herbal supplements. Do not change or stop your medicines unless your healthcare provider tells you to.

**BRINSUPRI may cause serious side effects including:**

- **Skin problems.** Tell your healthcare provider about any new skin symptoms. Your healthcare provider may send you to a dermatologist for an examination, if needed.

Please see additional Important Safety Information throughout and full [Prescribing Information](#) and [Patient Information](#) at [BRINSUPRI.com](http://BRINSUPRI.com).

**Brinsupri**<sup>®</sup>  
(brensocatib) tablets, 10mg/25mg

# BRINSUPRI was studied in the largest bronchiectasis clinical trial program

BRINSUPRI was approved based on 2 clinical studies, ASPEN and WILLOW. Participants received 1 dose, once a day, of either BRINSUPRI 10 mg, BRINSUPRI 25 mg, or placebo for the duration of the studies.

## Both studies included people who:



Had non-cystic fibrosis bronchiectasis



Had other conditions, including a history of asthma or COPD



Continued using their existing treatments

### THE ASPEN STUDY

**Participants:** 1,721 people 12 years and older    **Treatment period:** 1 year (52 weeks)

**BRINSUPRI 10 mg**  
583 people

**BRINSUPRI 25 mg**  
575 people

**Placebo**  
563 people

In the WILLOW study, 256 adults were treated once a day for 6 months, with 82 people receiving BRINSUPRI 10 mg, 87 people receiving BRINSUPRI 25 mg, and 87 people receiving placebo.

## IMPORTANT SAFETY INFORMATION (cont'd)

### BRINSUPRI may cause serious side effects including: (cont'd)

- **Dental problems.** Get regular dental checkups while taking BRINSUPRI. Brush and clean your teeth as recommended by your dentist. Tell your healthcare provider and contact your dentist if you experience new gum (gingival) or teeth (dental) symptoms.

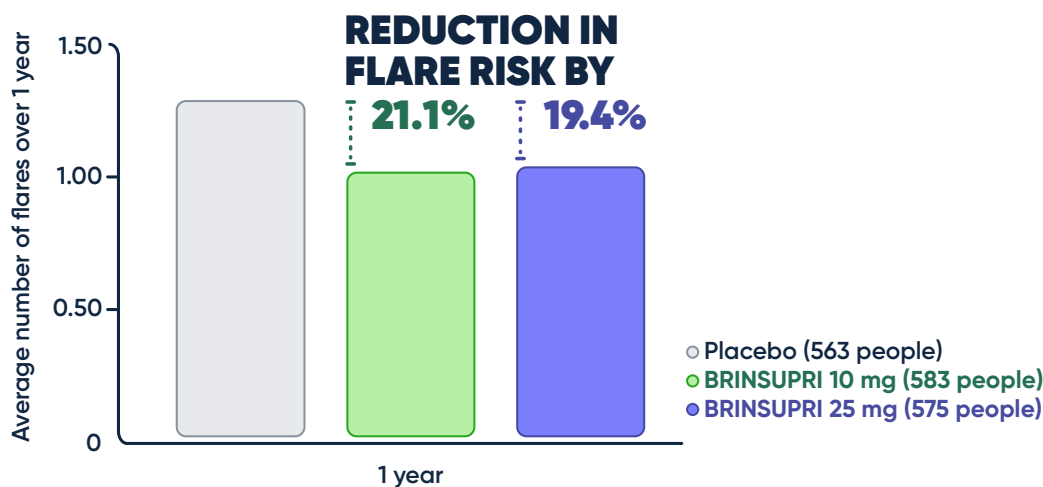
### Common side effects of BRINSUPRI

The most common side effects of BRINSUPRI include upper respiratory tract infection, headache, rash, dry skin, small areas of skin thickening (hyperkeratosis), and high blood pressure (hypertension).

Please see additional Important Safety Information throughout and full [Prescribing Information](#) and [Patient Information](#) at [BRINSUPRI.com](https://www.BRINSUPRI.com).

**Brinsupri**<sup>®</sup>  
(brensocatib) tablets, 10mg/25mg

# BRINSUPRI was proven to reduce bronchiectasis flares



In the ASPEN study, BRINSUPRI reduced the risk of flares by 21.1% with the 10-mg dose (1.02 flares) and 19.4% with the 25-mg dose (1.04 flares) when compared to those taking placebo (1.29 flares) over 1 year.

Results may vary.

## IMPORTANT SAFETY INFORMATION (cont'd)

**Less common side effects include** abnormal liver blood test, hair loss (alopecia), and skin cancers.

These are not all of the possible side effects of BRINSUPRI.

Please see additional Important Safety Information throughout and full [Prescribing Information](#) and [Patient Information](#) at [BRINSUPRI.com](https://www.BRINSUPRI.com).

**Brinsupri**<sup>®</sup>  
(brensocatib) tablets, 10mg/25mg

# A year without flares is possible with BRINSUPRI

MORE PEOPLE TAKING  
BRINSUPRI EXPERIENCED

# ZERO FLARES

When measured at 1 year in the ASPEN study, 48.5% of people taking BRINSUPRI 10 mg (283/583) or BRINSUPRI 25 mg (279/575) had no flares compared to 40.3% of people taking a placebo (227/563).



## IMPORTANT SAFETY INFORMATION (cont'd)

**Before taking BRINSUPRI, tell your healthcare provider about all of your medical conditions, including if you:**

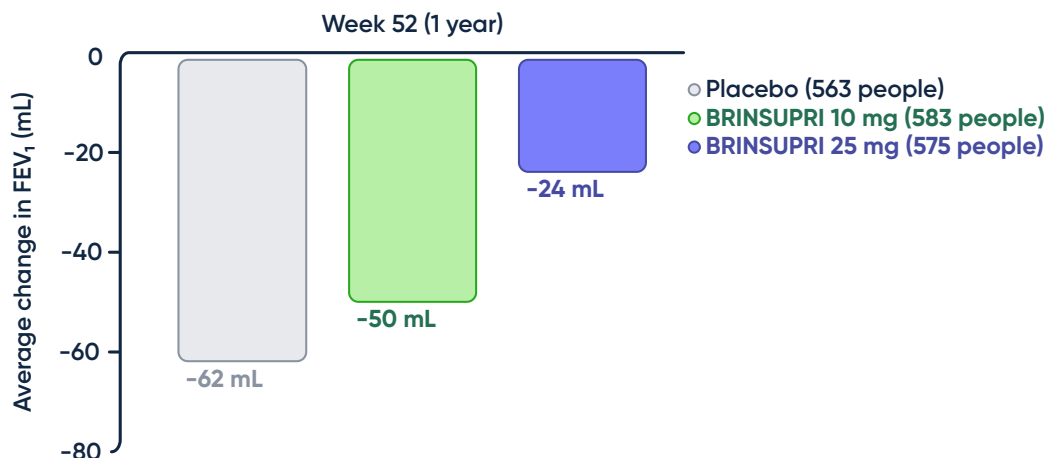
- have recently received or are scheduled to receive any live attenuated vaccinations.
- are pregnant or plan to become pregnant. It is not known if BRINSUPRI will harm your unborn baby.
- are breastfeeding or plan to breastfeed. It is not known if BRINSUPRI passes into your breast milk. Talk to your healthcare provider about the best way to feed your baby during this time.

**Please see additional Important Safety Information throughout and full [Prescribing Information](#) and [Patient Information](#) at [BRINSUPRI.com](https://www.brinsupri.com).**

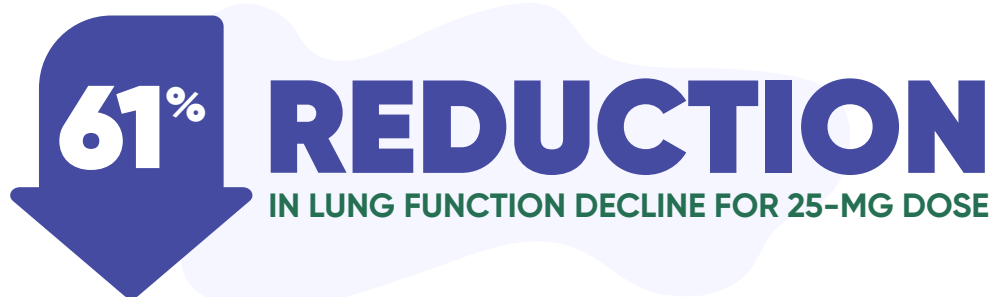
**Brinsupri**<sup>®</sup>  
(brensocatib) tablets, 10mg/25mg

# BRINSUPRI was proven to reduce lung function decline

Studies have shown that lung function naturally declines over time for everyone, but people with bronchiectasis experience greater decline. In the ASPEN study, BRINSUPRI 25 mg was shown to help reduce lung function decline when compared to placebo.



Post-bronchodilator FEV<sub>1</sub>, a common test that determines how well your lungs are working, was measured at 1 year in the ASPEN study. People taking placebo saw a decline of 62 mL compared with 50 mL for those taking BRINSUPRI 10 mg. The difference in FEV<sub>1</sub> between the 10-mg dose and placebo was not significant.



People taking BRINSUPRI 25 mg saw a decline of 24 mL, which was a 61% reduction in lung function decline when compared to a 62-mL decline for those taking placebo.

Results may vary.

FEV<sub>1</sub>=forced expiratory volume in 1 second.

## IMPORTANT SAFETY INFORMATION (cont'd)

**Tell your healthcare provider about all the medicines you take**, including prescription and over-the-counter medicines, vitamins, and herbal supplements. Do not change or stop your medicines unless your healthcare provider tells you to.

**Please see additional Important Safety Information throughout and full [Prescribing Information](#) and [Patient Information](#) at [BRINSUPRI.com](http://BRINSUPRI.com).**

**Brinsupri**<sup>®</sup>  
(brensocatib) tablets, 10mg/25mg

# The most common side effects of BRINSUPRI

The safety results below were seen in the ASPEN study.

	People taking BRINSUPRI 10 mg (582 people) / 25 mg (574 people)	People taking placebo (563 people)
Upper respiratory tract infection <sup>a</sup>	27%/29%	25%
Headache	7%/9%	7%
Rash <sup>b</sup>	4%/6%	4%
Dry skin <sup>c</sup>	3%/4%	1%
Small areas of skin thickening <sup>d</sup>	1%/3%	1%
High blood pressure	5%/2%	3%

<sup>a</sup>Upper respiratory tract infection includes coronavirus infection, COVID-19, flu, upper respiratory tract infection, viral infection, and viral upper respiratory tract infection.

<sup>b</sup>Rash includes different types of rashes, like those with flat discolored spots or small raised bumps, those that are itchy, those that are red or make your skin red, or those that cause skin inflammation.

<sup>c</sup>Dry skin includes different skin effects that could include dry or cracked skin, shedding of dead skin cells, and chapped, dry, or inflamed lips.

<sup>d</sup>Small areas of skin thickening includes skin thickening or extra skin growth in different areas, like the skin on the palms and soles of the feet.

The safety of BRINSUPRI was also evaluated in the WILLOW study and was generally similar to the table above, but with more dental side effects. These side effects were experienced by 9.9% of people taking the 10-mg dose, 10.1% of people taking the 25-mg dose, and 2.4% of those taking placebo.

## Additional safety considerations

Before using BRINSUPRI, tell your doctor if you are to receive any live vaccines, are pregnant (or planning to be), or are breastfeeding.

### BRINSUPRI may cause serious side effects including:

- **Skin problems.** Tell your healthcare provider about any new skin symptoms. Your healthcare provider may send you to a dermatologist for an examination, if needed.
- **Dental problems.** Get regular dental checkups while taking BRINSUPRI. Brush and clean your teeth as recommended by your dentist. Tell your healthcare provider and contact your dentist if you experience new gum (gingival) or teeth (dental) symptoms.

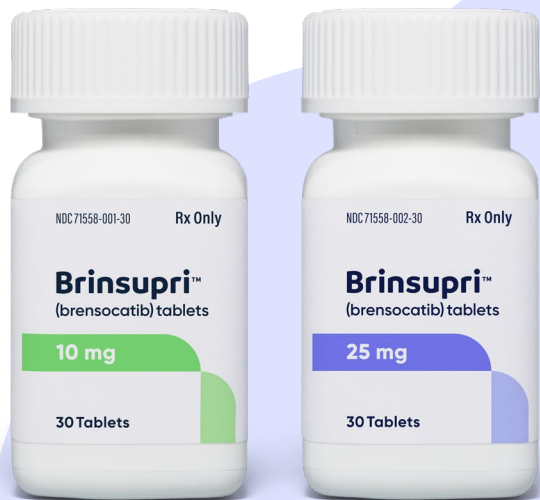
**Less common side effects include** abnormal liver blood test, hair loss (alopecia), and skin cancers.

These are not all of the possible side effects of BRINSUPRI.

Please see additional Important Safety Information throughout and full [Prescribing Information](#) and [Patient Information](#) at [BRINSUPRI.com](https://www.brinsupri.com).

**Brinsupri**<sup>®</sup>  
(brensocatib) tablets, 10mg/25mg

# BRINSUPRI is a once-daily pill that can fit into your schedule



10-mg pill



25-mg pill

BRINSUPRI is available in 2 doses that can be taken:



With or without food



At a time of day that works for you



As appropriate with your existing bronchiectasis treatment routine

Ask your pulmonologist if BRINSUPRI is right for you

## IMPORTANT SAFETY INFORMATION (cont'd)

**BRINSUPRI may cause serious side effects including:**

- **Skin problems.** Tell your healthcare provider about any new skin symptoms. Your healthcare provider may send you to a dermatologist for an examination, if needed.
- **Dental problems.** Get regular dental checkups while taking BRINSUPRI. Brush and clean your teeth as recommended by your dentist. Tell your healthcare provider and contact your dentist if you experience new gum (gingival) or teeth (dental) symptoms.

Please see additional Important Safety Information throughout and full [Prescribing Information](#) and [Patient Information](#) at [BRINSUPRI.com](http://BRINSUPRI.com).

**Brinsupri**<sup>®</sup>  
(brensocatib) tablets, 10mg-25mg

# There is support along your treatment journey

**Brinsupri**<sup>®</sup>  
(brensocaticib) tablets, 10mg-25mg

**inLighten**<sup>®</sup>  
Patient Support

The *inLighten*<sup>®</sup> Patient Support program offers you dedicated support and education

The *inLighten* team includes an:



*inLighten Coordinator*, who provides 1:1 support and information on insurance coverage, prescription savings, and deliveries from the specialty pharmacy



*inLighten Educator*, with a background in respiratory care,<sup>a</sup> who provides ongoing product and disease state education



If you are prescribed BRINSUPRI, you can enroll in the *inLighten Patient Support* program by scanning the QR code or visiting [brinsupri.inlightensupport.com](https://brinsupri.inlightensupport.com)

<sup>a</sup>It is not the role of the *inLighten Educator* to provide medical or treatment advice or replace the instructions you receive from your healthcare provider.

## Insurance covers BRINSUPRI for most people

Savings and financial support resources are available for eligible patients.

Please see additional Important Safety Information throughout and full [Prescribing Information](#) and [Patient Information](#) at [BRINSUPRI.com](https://BRINSUPRI.com).

**Brinsupri**<sup>®</sup>  
(brensocaticib) tablets, 10mg-25mg

# Here for you throughout your treatment with BRINSUPRI

Take a look at what your treatment journey with *inLighten* may look like if you enroll:

01

## Enroll in *inLighten*

You can choose to enroll with your doctor by visiting [brinsupri.inlightensupport.com](https://brinsupri.inlightensupport.com) or by calling 833-LIGHT-00 (833-544-4800) Monday–Friday, 8 AM–8 PM Eastern Time.

02

## Expect a call from your *inLighten* team

Your *inLighten* Coordinator will introduce the program and walk you through the next steps, and your *inLighten* Educator will provide an overview of the treatment.

03

## BRINSUPRI will be delivered to your door by a specialty pharmacy<sup>a</sup>

BRINSUPRI is available through a designated network of specialty pharmacies. Your specialty pharmacy will call each month to confirm the shipment of BRINSUPRI. Please make sure to answer or return calls from your specialty pharmacy. For those who enroll, your *inLighten* Coordinator can provide specific updates related to insurance coverage and shipping status from the specialty pharmacy.

04

## You'll receive ongoing support

Your *inLighten* support team, which includes an *inLighten* Coordinator and Educator, will provide focused education throughout your treatment journey.

<sup>a</sup>Insurance approvals and shipment coordination for a new medication can take time—often 2 to 3 weeks, or sometimes longer. Please reach out to your *inLighten* Coordinator if you have any questions.

Please see additional Important Safety Information throughout and full [Prescribing Information](#) and [Patient Information](#) at [BRINSUPRI.com](https://BRINSUPRI.com).

**Brinsupri**<sup>®</sup>  
(brensocatic) tablets, 10mg/25mg

# It's possible to have fewer bronchiectasis flares with BRINSUPRI



The first and only FDA-approved treatment specifically for people 12 years and older with non-cystic fibrosis bronchiectasis (NCFB)



A once-daily pill that can fit into your schedule



A proven reduction in bronchiectasis flares



Dedicated support throughout your treatment journey is available with *inLighten Patient Support*



Learn more at [BRINSUPRI.com](https://BRINSUPRI.com)

## IMPORTANT SAFETY INFORMATION (cont'd)

### Common side effects of BRINSUPRI

The most common side effects of BRINSUPRI include upper respiratory tract infection, headache, rash, dry skin, small areas of skin thickening (hyperkeratosis), and high blood pressure (hypertension).

These are not all of the possible side effects of BRINSUPRI.

**Call your doctor for medical advice about side effects. You may report side effects to the FDA at 1-800-FDA-1088 or [www.fda.gov/medwatch](https://www.fda.gov/medwatch).**

**Please see additional Important Safety Information throughout and full [Prescribing Information](#) and [Patient Information](#) at [BRINSUPRI.com](https://BRINSUPRI.com).**



© 2026 Insmmed Incorporated. All Rights Reserved. Insmmed, BRINSUPRI, and inLighten are registered trademarks of Insmmed Incorporated. All other trademarks are property of their respective owner. PP-BRIN-US-00526

**Brinsupri**<sup>®</sup>  
(brensocaticib) tablets, 10mg/25mg